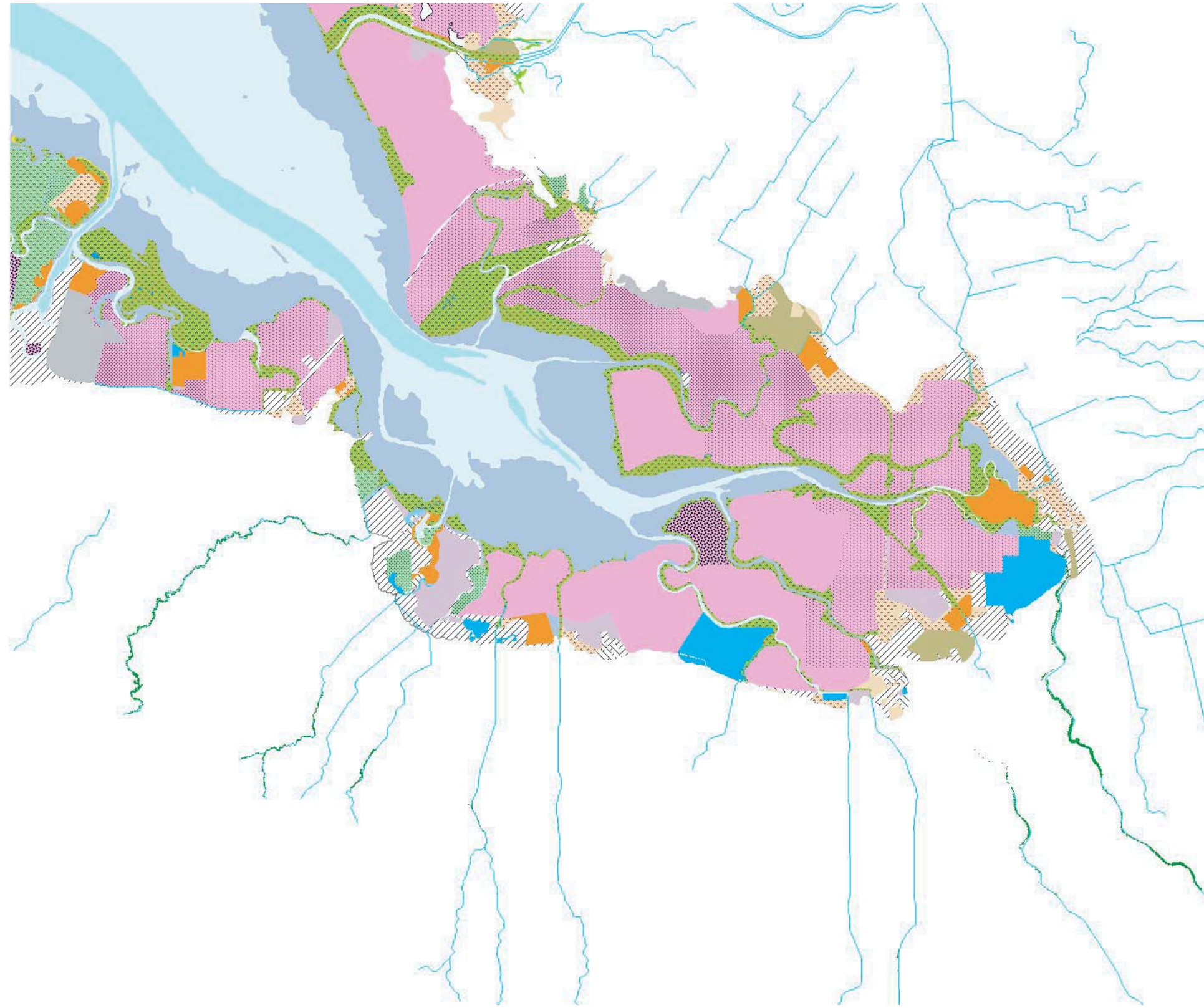


- Modern Watersheds
 - █ Riparian Forest
- Modern Rivers & Creeks
 - ~ River or Creek
- Modern Bayland
 - ~ Tidal-Upland Ecotone or margin
- Modern Baylands
 - █ Deep Bay or Deep Major Channel
 - █ Shallow Bay or Shallow Major Channel
 - █ Shell Beach
 - █ Bay Flat or Channel Flat
 - █ High-Elevation Tidal Marsh
 - █ Low/Mid-Elevation Tidal Marsh
 - █ Lagoon
 - █ Muted Tidal Marsh
 - █ Low Salinity Salt Pond
 - █ Medium Salinity Salt Pond
 - █ High Salinity Salt Pond
 - █ Crystallizer
 - █ Diked Marsh
 - █ Farmed Bayland
 - █ Storage or Treatment Basin
 - █ Inactive Salt Pond
 - █ Managed Marsh
 - █ Ruderal Bayland
 - █ Willow Grove in diked setting
 - █ Undeveloped Fill
 - Undeveloped Island (Hillslope)
 - ▨ Undefined Bayland
 - ▨ Developed Island or Fill



Source: San Francisco Estuary Institute, 1998-1999

Watershed Characteristics Report

